

Introducing

ASHTELdental 

ASHTEL Digital Radiography

- Sensor Type: CCD
- CCD Matrix 1790 x 1260 pixels
- Twain Compliant
- 2-year Manufacturer's Warranty
- Optional on-site installation and training
- USB 2.0 Connection
- Wireless Options
- VISTA Compatible



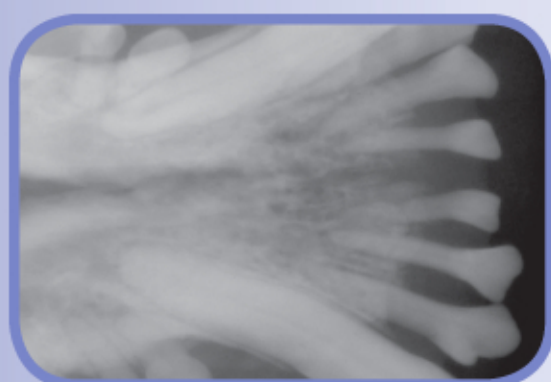
For **Veterinary** Use

Specially Designed for
Veterinary Dental Practices



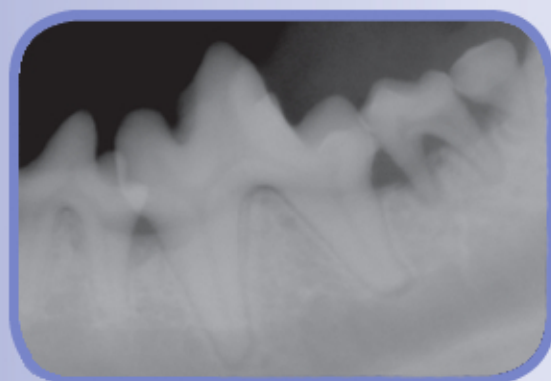
866.274.8351 • ashteldental.com

ASHTEL Digital Radiography



True Portable Mobility

The new Ashtel Digital Radiography system works seamlessly with the Aribex eXaminer or with your existing X-ray equipment, giving you crisp digital images without the need for any additional equipment or a darkroom.



High Quality Ergonomics

The Ashtel Digital radiography System is manufactured using an advanced industrial process which satisfies the strictest requirements in terms of solidity, water proofing and ease-of-use.

Technical Specifications

Technology:	CCD
Pixel size:	19 μ m x 19 μ m (Size 2)
CCD Matrix:	1790 x 1260 pixels
Sensitive area:	34mm x 24mm (816mm ²)
Grey scale:	12 bits, 4,096 levels of grey
Cable length:	2.95 m
Sealing standard:	IPX7 Waterproof
CE compliant:	directive CE 93/42
USB standard:	USB 2.0 High Speed (480 Mbit/s) and USB 1.1 Full Speed (11 Mbit/s)
Standards:	EN 60601-1 (medical appliance safety) EN 60601-1-2 (electromagnetic compatibility)

Connection Box

Maximum external dimensions:	surface 16cm x 16cm x 6cm with built-in sensor storage space.
Bus:	USB 2.0 compatible
CE compliance:	directive CE 93/42
Standards:	EN 60601-1, applicable to medical appliances
Power supply:	12V, 0.6A with included power supply unit

Compatible with ARIBEX
NOMAD™ eXaminer >



ASHTELdental 

866.274.8351 • ashteldental.com